

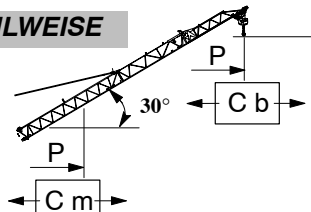
TECHNISCHE DATEN

1. DATENBLATT

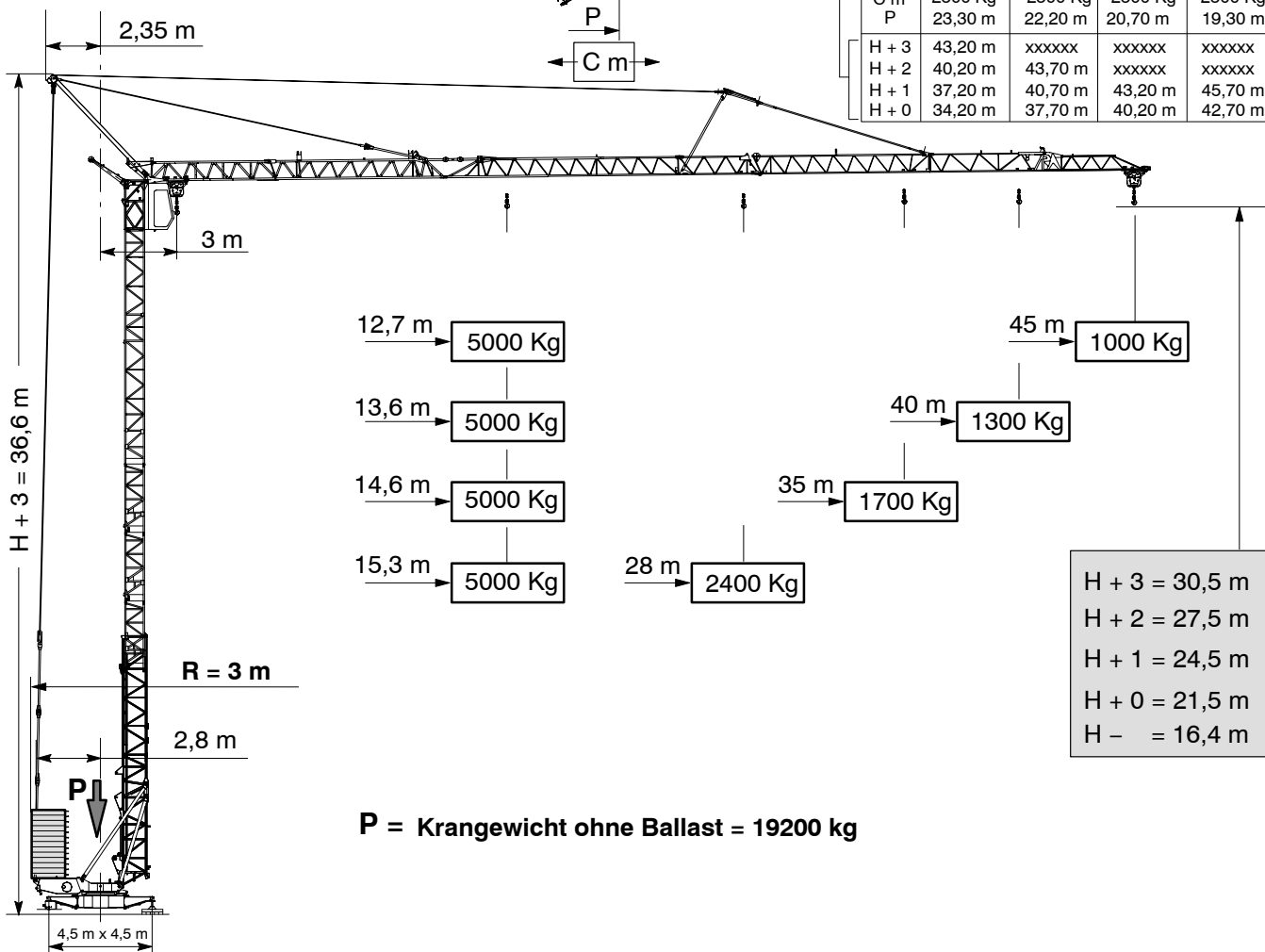
GTMR 346A

NF DIN 15018

WAHLWEISE



	28 m	35 m	40 m	45 m
C b	2400 Kg	1700 Kg	1300 Kg	1000 Kg
P	24,10 m	30,20 m	34,50 m	38,80 m
C m	2500 Kg	2500 Kg	2500 Kg	2500 Kg
P	23,30 m	22,20 m	20,70 m	19,30 m
H + 3	43,20 m	xxxxxx	xxxxxx	xxxxxx
H + 2	40,20 m	43,70 m	xxxxxx	xxxxxx
H + 1	37,20 m	40,70 m	43,20 m	45,70 m
H + 0	34,20 m	37,70 m	40,20 m	42,70 m



H + 3	= 30,5 m
H + 2	= 27,5 m
H + 1	= 24,5 m
H + 0	= 21,5 m
H -	= 16,4 m

P = Krangewicht ohne Ballast = 19200 kg

Heben	20 LVF12	bd		b8d		15 kW
		MV = 5,5 m / mn PV = 27,5 m / mn GV = 55 m / mn	2500 Kg 2500 Kg 1500 Kg	MV = 2,7 m / mn PV = 13,7 m / mn GV = 27,5 m / mn	5000 Kg 5000 Kg 3000 Kg	
Katzwerk	4 D3 V3 -1	15 - 30 - 58 m / mn				3 kW
		0 ----> 0,8 u / min				
Schwenkwerk	RCV 51	0 ----> 0,8 u / min				4,4 kW
Fahrwerk	TVD324	25 m / mn				2 x 3 kW
	TB 124	25 m / mn				2 x 3 kW
Kraftbedarf " 400 V (+ 6 % - 10 %) - 50 Hz " = 30 KVA						