

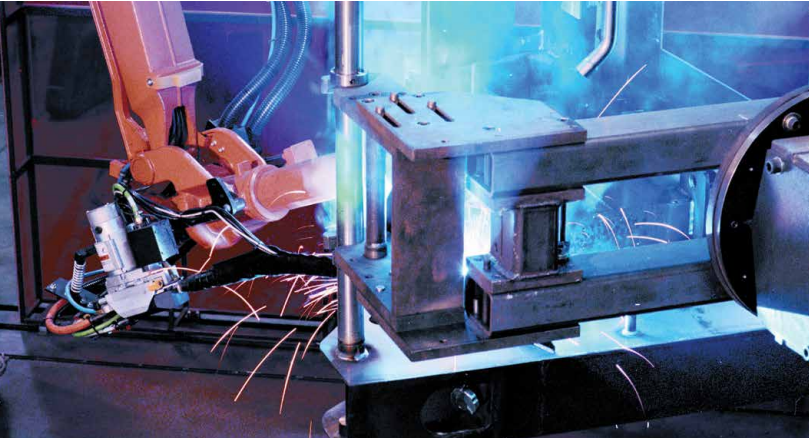
TRACK LOADERS



RT105 | RT165 | RT175 GEN:3 | RT185 | RT210 GEN:3 | RT215 | RT250 GEN:3 | RT255 | VT320



MADE IN THE
★ USA ★



GEHL®

IN 1859, AN AGRICULTURAL IMPLEMENT COMPANY, HOUSED IN A BLACKSMITH SHOP, WAS STARTED IN WEST BEND, WISCONSIN.

FROM THESE HUMBLE BEGINNINGS, THE GEHL BRAND HAS BECOME A MAJOR FORCE IN THE COMPACT EQUIPMENT INDUSTRY WORLDWIDE.

Since the beginning, Gehl has focused on providing solutions to our customer's needs by building quality, reliable products. With a long history of reliability and innovation, Gehl is responsive to the equipment and service needs of our customers.

With modern compact equipment manufacturing facilities in Yankton and Madison, South Dakota, and a state-of-the-art research and design facility in West Bend, Wisconsin, Gehl ensures that they are equipped with the finest in technology, tools and materials. And our top corps of engineers are skilled in designing and enhancing high-quality machines to fit the specific needs of our customers. Our equipment is modern in design and performance, but not too complicated to operate or service.

When you purchase a piece of Gehl equipment, you have an entire organization behind you and your business. When you need support, whether it be financing, parts or service, know that Gehl will be there to provide an exceptional experience. We continually strive to preserve the level of personalized attention that Gehl began with in 1859.

STAY ON TRACK WITH GEHL

- 
RT105
- 
RT165
- 
RT175 GEN:3
- 
RT185
- 
RT210 GEN:3
- 
RT215
- 
RT250 GEN:3
- 
RT255
- 
VT320

**WHAT IS THE CURE FOR THE TENSION HEADACHES CAUSED BY OTHER TRACK MACHINES?
THE PATENTED IDEALTRAX™ SYSTEM FROM GEHL.**

With many industry-exclusive features, including the patented IdealAccess™ Fold-Up Door* and the IdealTrax™ Automatic Track Tensioning System, our new line-up breaks the mold of the traditional industry standards.

* IdealAccess™ not available on the RT105 & RT165

IdealTrax™ | IdealAccess™



GEHL®

● RADIAL-LIFT and ● VERTICAL-LIFT

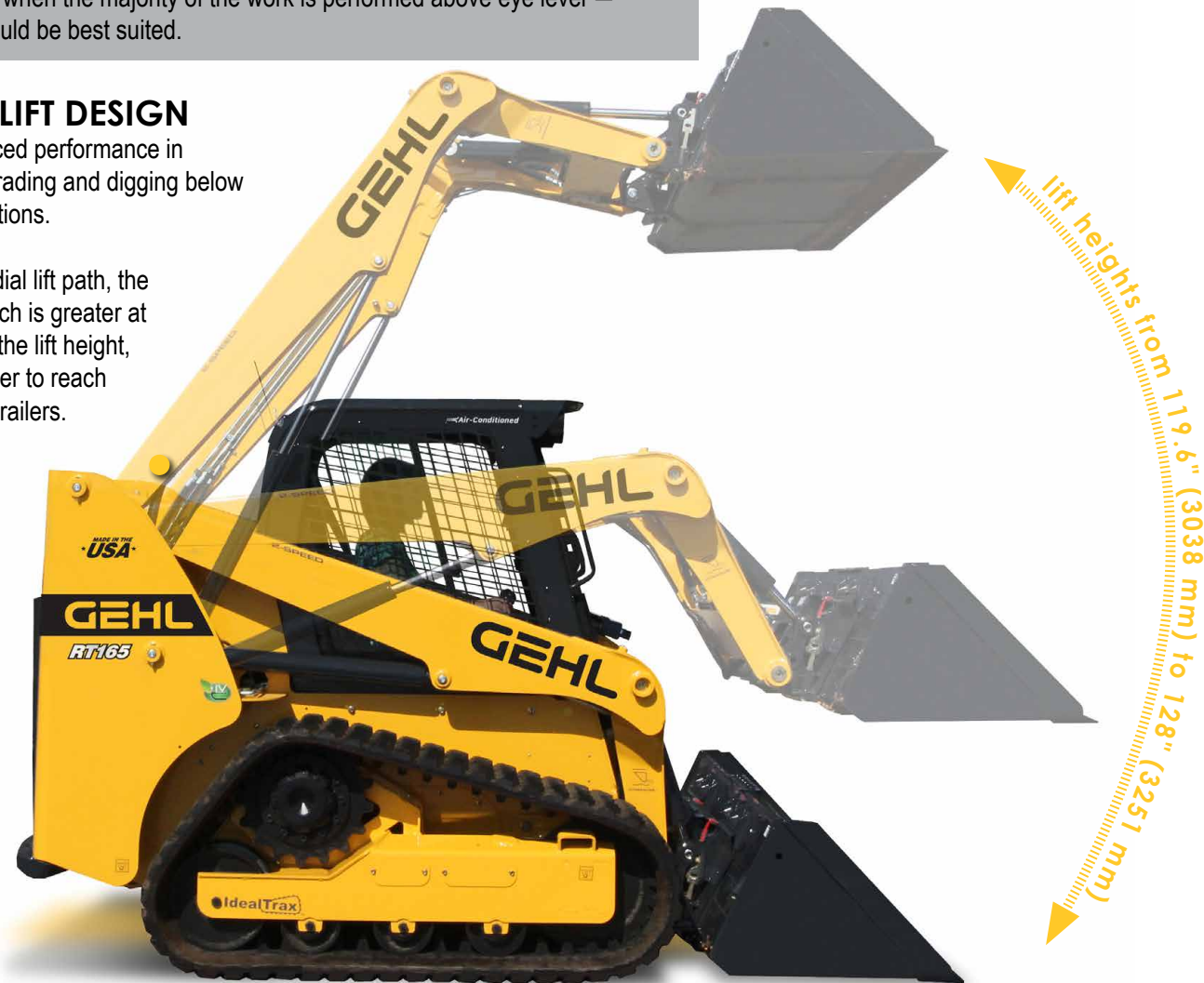
TWO DESIGNS - ENDLESS POSSIBILITIES

As a general rule, radial lift is best when the majority of the work is performed below eye level, vertical lift is ideal for lifting and dumping at higher heights. For example, when the majority of the work is performed above eye level — vertical lift would be best suited.

● **RADIAL-LIFT DESIGN**

Offers enhanced performance in excavating, grading and digging below grade applications.

Due to the radial lift path, the maximum reach is greater at the middle of the lift height, making it easier to reach the center of trailers.



● **VERTICAL-LIFT DESIGN**

Providing more reach at full lift height is optimal for applications that require loading and stacking at high heights. By keeping the load closer to the machine, lift capacities are increased over radial-lift models.



● **TRUE VERTICAL**

The VT320 has a true vertical lift path of almost 11 feet.

● **REAR VISIBILITY**

Rear lift arm support bar is positioned out of the sight line as the lift arm is raised. This allows for excellent visibility to the rear through the entire lift cycle.

● **EXCELLENT FORWARD REACH**

The Gehl radial-lift track loaders provide excellent forward reach at the middle of the lift path. This provides high performance for loading flatbed trucks, backfilling or dumping over a wall.



● POWER and ● PERFORMANCE

NEW
RT105: ULTRA-COMPACT TRACK LOADER

The new ultra compact RT105 is built for efficiency. Super high power drive chains feature heavy, high-strength construction, designed for the most rugged conditions and tight spaces.

● **LOWEST CLEARANCE HEIGHT**
 Industry leading overhead clearance of 71.5" ground to the top of the ROPS.

● **HIGH BREAKOUT FORCES**

TILT 2,975 lbs. (1346 kg)
 LIFT 3,042 lbs. (1376 kg)

● **TIER IV ENGINE**

POWER 31.8 hp (23.7 kW)
 TORQUE 80.7 ft.-lbs. (109.4 Nm)

● **GROUND CLEARANCE**

RT105 7.5" (191 mm)

● **ULTRA-COMPACT**

The RT105 has a width of 50.8" (1290 mm) when the bucket is detached. Industry leading overall machine clearance height of 71.5" (1816 mm) ground to the top of the ROPS.

● **LIFT HEIGHT**

RT105 109" (2769 mm)



● **IDEALTRAX™**
INDUSTRY EXCLUSIVE
AUTOMATIC TRACK TENSIONING SYSTEM

Eliminate daily tension checks and costly track replacements with the IdealTrax™ system. Tracks are automatically tensioned when the engine is started and during operation. Tension is released when the engine is shut off.

● **RATED OPERATING CAPACITY**

RT105 1,050 lbs. (476 kg)

● **ADAPTED SKID LOADER CHASSIS**

Custom built from the proven design of the R105 skid loader to aid in superior weight distribution. This design enhances stability, grading, tractive effort, and ride control.

● POWER and ● PERFORMANCE

RT165: THE IDEAL TRACK LOADER

From the barn to the jobsite this mid-sized track loader offers compact power to impress any operator. Designed, built and tested in the USA to ensure limited downtime and maximum efficiency.

● HIGH BREAKOUT FORCES

TILT	4,230 lbs. (1919 kg)
LIFT	5,060 lbs. (2295 kg)

● IDEALTRAX™
INDUSTRY EXCLUSIVE
AUTOMATIC TRACK
TENSIONING SYSTEM

Eliminate daily tension checks and costly track replacements with the IdealTrax™ system. Tracks are automatically tensioned when the engine is started and during operation. Tension is released when the engine is shut off.

● CHOICE OF CONTROLS
Choose between pilot joystick, T-bar, or hand/foot controls to suit operator preference. A conversion kit is available for the pilot dual-hand control system.

● RATED OPERATING CAPACITY
RT165 1,650 lbs. (794 kg)

● TIER IV ENGINE
POWER 69.3 hp (52 kW)
TORQUE 178 ft.-lbs. (241Nm)



● ADAPTED SKID LOADER CHASSIS
Custom built from the proven design of the R165 skid loader to aid in superior weight distribution. This design enhances stability, grading, tractive effort, and ride control.

● COUNTERWEIGHT/BUMPER
Gain extra tipping capacity while offering increased rear protection.

● GROUND CLEARANCE
RT165 7.3" (185 mm)

● LIFT HEIGHT
RT165 119.6" (3038 mm)



Narrow Frame 66" (1676 mm)
Wide Frame, Narrow Tracks 68" (1727 mm)
Wide Frame, Wide Tracks 71.3" (1811 mm)

● OPTIMIZED
RADIAL LIFT ARM
Durable design provides increased strength and optimal loading performance.

● MACHINE WIDTH OPTIONS
The RT165 has a width of 71.3" (1811 mm) when outfitted with wide tracks and 68" (1727 mm) with the narrow track option. Customize your width for applications needing a more compact machine. A narrow frame is available to special order with a 66" (1676 mm) overall width.



● POWER and ● PERFORMANCE

ELECTRONIC HYDRAULIC ADJUSTABILITY

The ultimate solution in adjustability. Easily switch operator control options, travel speed and hydraulic flow to set your machine to perfectly match each project or task.

● **IDEALTRAX™**
INDUSTRY EXCLUSIVE
AUTOMATIC TRACK TENSIONING SYSTEM

IdealAccess™



● **FOLD-UP DOOR**
This patented new design provides cab-to-canopy versatility, all while maintaining low machine height and a Level II FOPS certification.

● **INCREASED BREAKOUT FORCES**
Enhanced breakout forces on the GEN:3 models make these machines your greatest allies on the job with tilt breakout forces from 5,354 lbs. (2 429 kg) to 8,384 lbs. (3 803 kg) and lift breakout forces from 5,016 lbs. (2 275 kg) to 7,437 lbs. (3 373 kg).

● **SWITCHABLE CONTROLS**
The operator can switch the controls from joystick to dual hand effortlessly.
RT175 GEN:3, RT210 GEN:3 & RT250 GEN:3

● **TRAVEL SPEED LIMIT OPTION**
Lowers maximum speed and allows full joystick movement. Operate hydraulically powered attachments at full speed with slow, controlled precision.

● **RATED OPERATING CAPACITY**

RT175 GEN:3	1,750 lbs. (794 kg)
RT210 GEN:3	2,100 lbs. (953 kg)
RT250 GEN:3	2,500 lbs. (1134 kg)

● **TIER IV ENGINES**

	POWER	TORQUE
RT175 GEN:3	69.9 hp (52.1 kW)	179 ft.-lbs. (242.7 Nm)
RT210 GEN:3	72 hp (53.7 kW)	206 ft.-lbs. (279.3 Nm)
RT250 GEN:3	74.3 hp (55.4 kW)	243 ft.-lbs. (330 Nm)



● **DEDICATED, WELDED TRACK LOADER CHASSIS**
Custom built to aid in superior weight distribution, which enhances stability, grading, tractive effort, and ride control.

● **GROUND CLEARANCE CLASS LEADING**

RT175 GEN:3	13.1" (333 mm)
RT210 GEN:3	13.2" (335 mm)
RT250 GEN:3	13.2" (335 mm)

● **HORSEPOWER MANAGEMENT SYSTEM**
This feature monitors and adjusts the hydrostatic drive pump to produce the ideal tractive effort.



● **COUNTERWEIGHT/BUMPER**
Gain extra tipping capacity while offering increased rear protection.
Optional on the RT175 GEN:3 and RT210 GEN:3. Standard on the RT250 GEN:3. Additional side-mounted counterweight is optional on the RT250 GEN:3.

● **LIFT HEIGHT CLASS LEADING**

RT175 GEN:3	128" (3251 mm)
RT210 GEN:3	128" (3251 mm)
RT250 GEN:3	128" (3251 mm)

● **OPTIMIZED RADIAL LIFT ARM**
Durable design provides increased strength and up to 128" (3251 mm) of lift height - higher than competitors with similar rated operating capacities.

● **STRAIGHT TRACKING**
This feature provides for in-cab, tool-free adjustment of individual track speeds, ensuring the machine drives straight.



● POWER and ● PERFORMANCE

NEW PILOT SERIES - TRACK LOADERS



The Pilot Series Track Loaders from Gehl are the IDEAL machines. Featuring our revolutionary seat mounted pilot-operated control system, the Pilot Series is the ideal mix of simplicity and technology. Our controls move with the operator, even on bumpy terrain and eliminates the need for floor-mounted control towers for more legroom and operator comfort.

TWO ADDITIONAL MODELS IN THE GEHL PILOT SERIES LINE-UP



RT165
Dual-Hand,
Hand/Foot or
Pilot Control Joystick
Shown on pg. 8



VT320
Pilot Control
Joystick Only
Shown on pg. 14



RT185

RT185

● **RATED OPERATING CAPACITY**

RT185	1,850 lbs. (839 kg)
RT215	2,150 lbs. (975 kg)
RT255	2,550 lbs. (1157 kg)

● **TIER IV ENGINES**

	POWER	TORQUE
RT185	69.9 hp (52.1 kW)	178 ft.-lbs. (241 Nm)
RT215	72 hp (53.7 kW)	217 ft.-lbs. (294 Nm)
RT255	74.3 hp (55.4 kW)	243 ft.-lbs. (330 Nm)



RT215

RT215



RT255

RT255

● **LIFT HEIGHT**

RT185	128" (3251 mm)
RT215	128" (3251 mm)
RT255	128" (3251 mm)

● **GROUND CLEARANCE**

RT185	12.5" (318 mm)
RT215	12.6" (320 mm)
RT255	12.3" (313 mm)

● **PILOT JOYSTICK CONTROLS**
The hydraulic-pilot controls found in the Gehl skid loader line control the all-new Pilot Series track loaders. By mounting the controls to the seat, they move with the operator.

● POWER and ● PERFORMANCE

VT320: SUPER SIZE YOUR FLEET

The VT320 is the largest vertical lift track loader in the Gehl family of products. Featuring a 3,200 pound rated operating capacity, this track loader is the perfect solution for lifting heavy loads and loading (or unloading) trucks.

● **IDEALTRAX™**
INDUSTRY EXCLUSIVE
AUTOMATIC TRACK TENSIONING SYSTEM

IdealAccess™



● **FOLD-UP DOOR**

The Gehl patented design provides cab-to-canopy versatility, all while maintaining low clearance and a Level II FOPS certification.

● **PILOT JOYSTICK CONTROLS**

The hydraulic-pilot controls found in the Gehl skid loader line control the all-new VT320 track loader. By mounting the controls to the seat, they move with the operator.



● **TIER IV ENGINES**

VT320

POWER

114 hp (85 kW)

TORQUE

339.3 ft.-lbs. (460 Nm)

VT320

● **POWERFUL BREAKOUT FORCES**

Class-leading lift breakout force and high tilt breakout force give you the power needed to break out concrete slabs, frozen piles of dirt or remove tree stumps.

TILT

VT320

9,901 lbs. (4491 kg)

LIFT

7,491 lbs. (3398 kg)



● **COUNTERWEIGHT/BUMPER**

Standard rear bumper protects the rear of the machine. Optional side-mounted counterweights provide additional operating capacity.

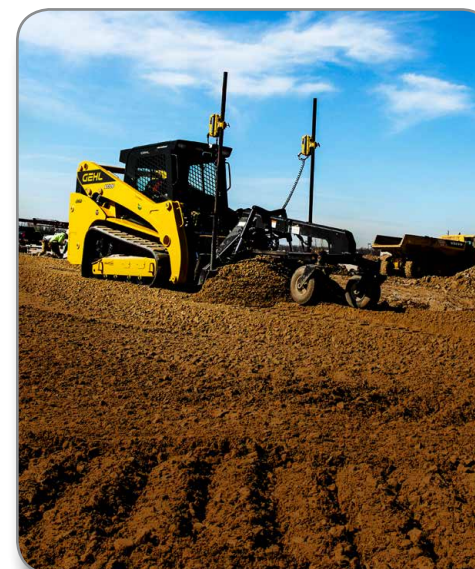
● **LIFT HEIGHT**

VT320 130" (3302 mm)

● **GROUND CLEARANCE**

VT320

12.16" (309 mm)



● **VERTICAL LIFT ARM**

The vertical lift path design maintains the forward reach at full lift height. This is ideal for applications that require loading and placement of materials.

● **ADD VERSATILITY**

Lift arm down stops are adjustable for added attachment versatility.

● **ECO MODE**

Allows the machine to run at reduced power while maintaining cycle times.



● **DEDICATED, WELDED TRACK LOADER CHASSIS**

Designed to aid in superior weight distribution, which enhances stability, grading, tractive effort, and ride control.



COMFORT and SAFETY



ELECTRIC ATTACHMENT CONTROL

This factory-installed option controls multi-function attachments directly through the joystick.

PREMIUM SEAT

Standard deluxe, high-back mechanical suspension seat or an optional air-ride seat for operator comfort.

EH controls

Pilot controls

OPERATOR PRESENCE

Brakes are applied and hydraulics are disabled whenever the operator raises the restraint bar, leaves the seat or switches off the ignition.

CREATURE COMFORTS

Dome light, cup holder, two 12-volt outlets, and multiple adjustable air vents.

ARMRESTS/RESTRAINT BARS

All instrumentation and fully adjustable joystick control towers are conveniently located on the armrests for easy access. High-mounted restraint bars provide ample clearance for the operator's legs.

PRESSURIZED CAB

Optional, pressurized sealed cab enclosure with sound reduction material and large rear-mounted cabin air filter provides a cleaner and quieter operating environment.

OPERATOR STATION FEATURES



REAR VIEW CAMERA

Increase visibility to the rear of the machine with a rear view camera.



RADIO OPTION

Factory installed, this AM/FM deluxe radio option customizes your cab.



CLIMATE CONTROL

Heat is standard on all cab models. Upgrade to air conditioning for additional comfort.



INTEGRATED LCD DISPLAY

Easy-to-use, multi-function display incorporates all warning/operation lights and machine configuration screens. Single button allows for simple scrolling and selection of various display functions.

Available on RT105, RT165, RT185, RT215, RT255 & VT320

STRAIGHT TRACKING

Tracking is easily corrected from the operator seat using the display. It can also be used to compensate for offset or side-loaded attachments.

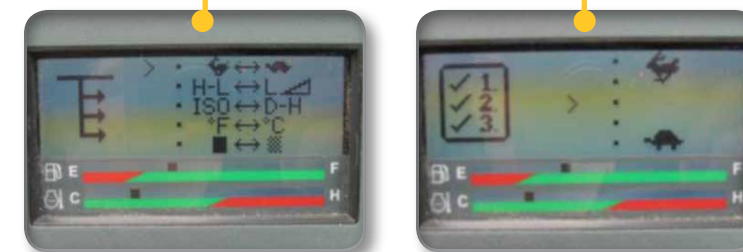
Available on RT175, RT210 & RT250

DRIVE SENSITIVITY ADJUSTMENT

Five settings are available to adjust the operator drive speeds and response times. Each user can customize the control to their preference using the LCD display.

Available on RT175, RT210 & RT250

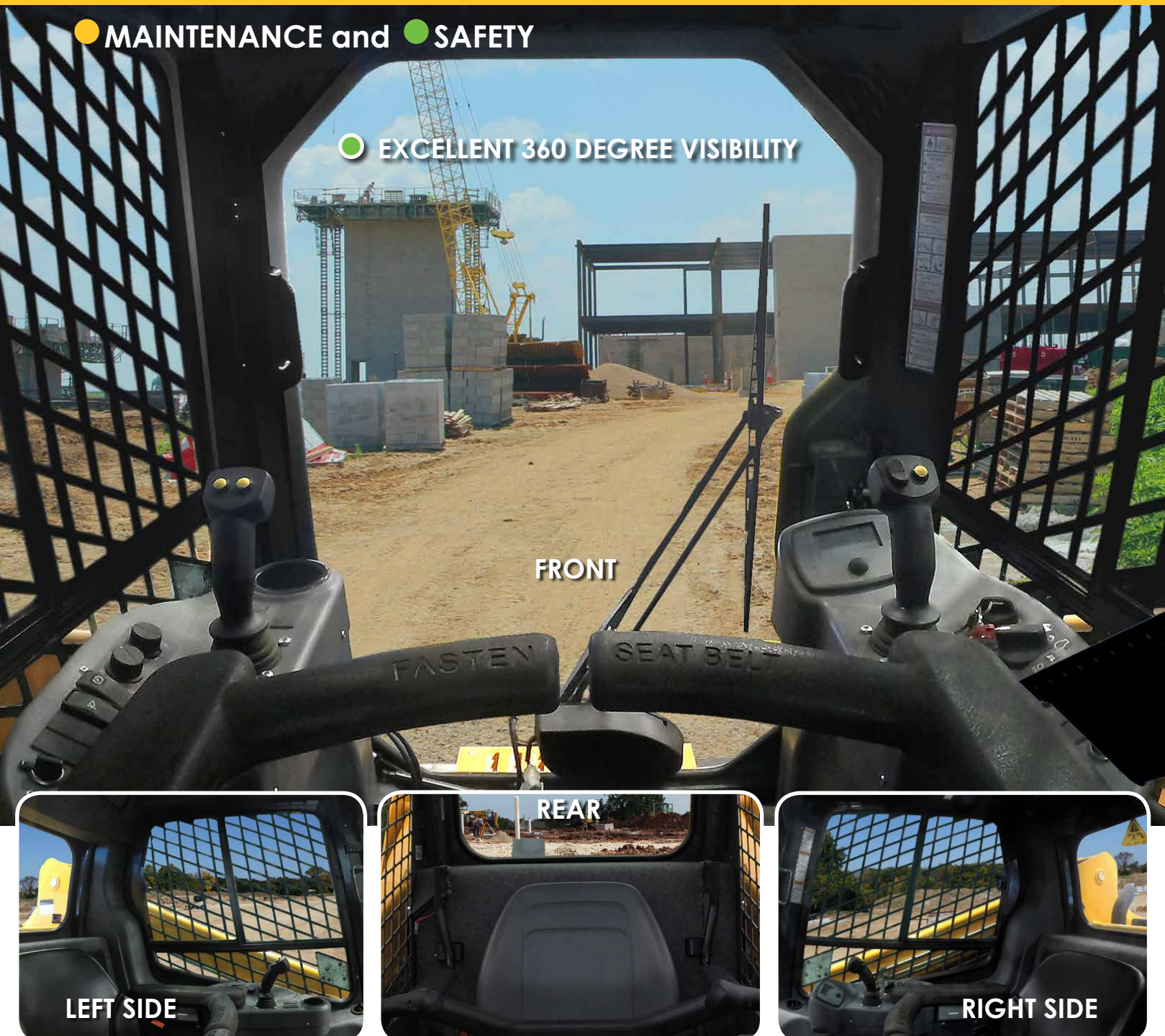
Drive Sensitivity Adjustment	Operator Feel Emulation
5 - Rabbit	+ 20% = Fastest • Highly Responsive • Highest Volume
4 - ●	+ 10% = Quick • Very Responsive • Control
3 - ●●	Standard Setting • Normal Response Time • Focused Productivity
2 - ●●●	- 10% = Precision • Improved Control
1 - Turtle	- 20% = High Precision • Easy Control • More Precise



RT Series GEN:3 model cab shown

● MAINTENANCE and ● SAFETY

● EXCELLENT 360 DEGREE VISIBILITY



FRONT

REAR

LEFT SIDE

RIGHT SIDE

RT Series GEN:3 model cab shown

EXCELLENT VIEWS FROM ALL SIDES FOR SAFE AND PRECISE OPERATION.

Excellent visibility to the front, sides and rear of the machine allow for precise placement of loads and reduced jobsite incidents. A high-mounted seat provides an excellent vantage point to the attachment and cutting-edge.

LESS DOWNTIME PUTS MONEY IN YOUR POCKET

● **IDEALTRAX™ INDUSTRY EXCLUSIVE AUTOMATIC TRACK TENSIONING SYSTEM**

- ▶ Eliminates the need for manually tensioning the tracks on the loader before operation, saving valuable time on the jobsite.
- ▶ Increases the life of the tracks (*up to 15%* in tested conditions*), sprockets and bearings by ensuring the proper tension immediately upon start-up and during use, and tension release when the machine is shut down.
- ▶ Track changes in the field are facilitated with the simple flip of a switch in the rear compartment. Removing a track without the IdealTrax™ system can take up to one hour per track. With IdealTrax™, it takes just minutes.

*Track life improvement varies greatly depending on conditions, application and upkeep; results may vary.



ENGINE NOT RUNNING



ENGINE RUNNING

● **17-TOOTH SPROCKETS**

17-tooth, forged drive sprockets have 40% more hardness depth for improved sprocket life. Larger sprockets increase track-to-chassis clearance, so tracks can be cleaned out with ease.

● **ENGINE ACCESS**

Full access to filters and fluid reservoirs for servicing and maintenance is made possible by a swing-out rear door and a large, lockable engine cover.

● **SWING OUT COOLER**

Only available on RT165

● **TILTABLE ROPS/FOPS ASSEMBLY**

Featuring gas-spring assist for easy internal access to the pumps, hydraulic valve bank and drive motors.

● **SAFETY RESTRAINT**

Innovative restraint allows for secure positioning of the cab in the maintenance position. Restraint can be secured in position by one person.

● **TILT-OUT FOOT POD**

This feature allows for best-in-class foot well cleanout and provides perfect access to the fuel tank and other components under the cab.

Not available on RT105 & RT165



CUSTOMIZE YOUR RIDE.

Gehl offers a variety of accessories and upgrades that can be easily added to new or used equipment. These can help enhance an existing unit or customize one for a particular job. Whether you are looking to add a counterweight, boost your hydraulics, or enclose a cab to add heat and air conditioning, Gehl has the options you need to craft your ideal ride.

TRACK OPTIONS



CAB ENCLOSURES



HYDRAGLIDE™*



CONTROLS (RT165 SHOWN)



SWITCHABLE SELF-LEVEL



RADIO



AIR CONDITIONING*



HIGH-FLOW HYDRAULICS*



POWER-A-TACH®*



REAR VIEW CAMERA*



COUNTERWEIGHT



FOLD-UP DOOR*



not available on RT105 or RT165

*not available on RT105

PROTECT YOUR INVESTMENT.

Trust the experts.
Make the *right* choice.

You expect year-to-year productivity from your Gehl equipment. That's why your trained and accredited Gehl dealer offers you the experience and skill necessary to maximize your equipment's performance. From routine maintenance to XPRT Genuine Parts to XPRT Protection Plan, your Gehl dealer is a partner you can count on to keep your equipment running smoothly.



XPRT
GENUINE PARTS

ROUTINE Maintenance



Eliminate unexpected repair costs and take better care of your Gehl equipment with the XPRT Protection Plan®. It ensures repairs will be made quickly with manufacturer-approved XPRT genuine parts by trained mechanics. If you're interested in saving money over the long haul, the XPRT Protection Plan® is an investment you should consider.

Features include:

- Affordable options available to meet your needs
- Select either powertrain component or full machine coverage for the right kind of protection for your equipment
- You decide the number of years and hours of coverage needed
- Enroll in the Plan on the day you purchase eligible equipment, or any time within six months or 500 hours from equipment registration

XPRT
PROTECTION PLAN

GEHL

● ATTACHMENTS

CRAVE FLEXIBILITY? GEHL RT SERIES TRACK LOADERS ARE THE PERFECT SOLUTION.

Compatible with most allied loader attachments, the RT Series Track Loaders from Gehl provide superior loader functionality while minimizing damage to ground surfaces. Perfect for landscape, agriculture, construction or rental - these machines are up for any challenge.



BEST SELLERS LIST

● Available accessories

	RT105	RT165	RT175 GEN:3	RT185	RT210 GEN:3	RT215	RT250 GEN:3	RT255	VT320
AUGERS - CHAIN DRIVE									
1650 CL Auger Drive - Round - 2 9/16" (65 mm)	Std. Flow	Std. Flow	Std. Flow	Std. Flow	Std. Flow	Std. Flow	Std. Flow	Std. Flow	N/A
1650 CLH Auger Drive - Hex - 2" (51 mm)	Std. Flow	Std. Flow	Std. Flow	Std. Flow	Std. Flow	Std. Flow	Std. Flow	Std. Flow	N/A
AUGERS - PLANETARY DRIVE									
PA 210 Planetary Auger Drive - Round - 2 9/16" (65 mm)	N/A	Std. Flow	Std. Flow	Std. Flow	Std. Flow	Std. Flow	Std. Flow	Std. Flow	Std. Flow
PA 220H Planetary Auger Drive - Hex - 2" (51 mm)	N/A	Std. Flow	Std. Flow	Std. Flow	Std. Flow	Std. Flow	Std. Flow	Std. Flow	Std. Flow
AUGERS - BITS									
SQ 9" (229 mm) Auger Bit - Round - 4 teeth - 2 9/16" (65 mm)	●	●	●	●	●	●	●	●	●
SQ 12" (305 mm) Auger Bit - Round - 4 teeth - 2 9/16" (65 mm)	●	●	●	●	●	●	●	●	●
SQ 9" (229 mm) Auger Bit - Hex - 4 teeth - 2" (51 mm)	●	●	●	●	●	●	●	●	●
SQ 12" (305 mm) Auger Bit - Hex - 4 teeth - 2" (51 mm)	●	●	●	●	●	●	●	●	●
SQ 18" (457 mm) Auger Bit - Hex - 6 teeth - 2" (51 mm)	●	●	●	●	●	●	●	●	●
BRUSH MOWER									
Standard Flow Rotary Brush Mowers - 48", 60", 66", 72", 78"	Std. Flow	Std. Flow	Std. Flow	Std. Flow	Std. Flow	Std. Flow	Std. Flow	Std. Flow	Std. Flow
High Flow Rotary Brush Mowers - 72", 78", 90"	N/A	High Flow	High Flow	High Flow	High Flow	High Flow	High Flow	High Flow	High Flow
PALLET FORKS									
Pallet Fork Frame - Heavy Duty - Requires two tines <i>Can customize with dealer name (on orders of 10 or more)</i>	●	●	●	●	●	●	●	●	●
Heavy Duty Class II Tine 48" (1219 mm)	N/A	Std. Flow	Std. Flow	Std. Flow	Std. Flow	Std. Flow	Std. Flow	Std. Flow	Std. Flow
Side Shift pallet Fork with 48" (1219 mm) Tines	N/A	Std. Flow	Std. Flow	Std. Flow	Std. Flow	Std. Flow	Std. Flow	Std. Flow	Std. Flow
Sliding Tine Pallet with 48" (1219 mm) Hydraulic Sliding Tines	N/A	Std. Flow	Std. Flow	Std. Flow	Std. Flow	Std. Flow	Std. Flow	Std. Flow	Std. Flow
LOG GRAPPLES									
Log Grapple	N/A	Std. Flow	Std. Flow	Std. Flow	Std. Flow	Std. Flow	Std. Flow	Std. Flow	Std. Flow
GRADER BLADES									
8" (203 mm) Grader Blade with proportional current valve	N/A	Std. Flow	Std. Flow	Std. Flow	Std. Flow	Std. Flow	Std. Flow	Std. Flow	Std. Flow
RAKES									
76" (1930 mm) Auto Rake	N/A	Std. Flow	Std. Flow	Std. Flow	Std. Flow	Std. Flow	Std. Flow	Std. Flow	Std. Flow
82" (2083 mm) Grader Rake	N/A	Std. Flow	Std. Flow	Std. Flow	Std. Flow	Std. Flow	Std. Flow	Std. Flow	Std. Flow
76" (1930 mm) Preparator Rake	Std. Flow	Std. Flow	Std. Flow	Std. Flow	Std. Flow	Std. Flow	Std. Flow	Std. Flow	Std. Flow
90" (2286 mm) Power Rake with hydraulic angle	N/A	Std. Flow	Std. Flow	Std. Flow	Std. Flow	Std. Flow	Std. Flow	Std. Flow	Std. Flow
MULCHER									
48" (1219 mm) Brush Mulcher	N/A	Std. Flow	Std. Flow	Std. Flow	Std. Flow	Std. Flow	N/A	N/A	N/A
ROCK WHEEL									
Rock Wheel with 4.5" (114 mm) wheel, Dual Circuit	N/A	N/A	High Flow	High Flow	High Flow	High Flow	High Flow	High Flow	High Flow

● STANDARD ● OPTIONAL

	RT105	RT165	RT175 GEN:3	RT185	RT210 GEN:3	RT215	RT250 GEN:3	RT255	VT320
PERFORMANCE									
All-Tach® Mounting System	●	●	●	●	●	●	●	●	●
IdealTrax™ Automatic Track Tensioning System	●	●	●	●	●	●	●	●	●
Straight Tracking			●						
Power-A-Tach® Mounting System		●	●	●	●	●	●	●	●
Selectable Self-Leveling Lift Action (Self-Level standard)	●	●	●	●	●	●	●	●	●
Two-speed Hydrostatic Drive System									●
Horsepower Management System									●
Easy Manager Telematics	●	●	●	●	●	●	●	●	●
ENGINE									
Engine Alert System with Error Display	●	●	●	●	●	●	●	●	●
Engine Automatic Shutdown System	●	●	●	●	●	●	●	●	●
Glowplugs Starter Assist	●	●	●	●	●	●	●	●	●
Dual-Element Air Cleaner with Indicator	●	●	●	●	●	●	●	●	●
ECO Mode									●
HYDRAULICS									
Auxiliary Hydraulics	●	●	●	●	●	●	●	●	●
High-Flow Auxiliary Hydraulics		●	●	●	●	●	●	●	●
UNDERCARRIAGE									
Elevated Planetary Final Drives		●	●		●		●		●
Maintenance Free Dual and Triple Flange Rollers Each Side	3	3	3	4	4	5	4	5	4
Single Flange Front/Dual Flange Rear Idlers		●	●				●		●
Rubber Track Undercarriage System	●	●	●	●	●	●	●	●	●
Servo-Controlled Hydrostatic Drive		●							●
Dedicated Undercarriage	●	●	●	●	●	●	●	●	●
STRUCTURE									
Tilt-out Foot Pod			●	●	●	●	●	●	●
Back-up Alarm	●	●	●	●	●	●	●	●	●
Combination Radiator & Hydraulic Oil Cooler	●	●	●	●	●	●	●	●	●
ROPS/FOPS Level II Overhead Guard	●	●	●	●	●	●	●	●	●
Anti-Vandalism Lock Provisions	●	●	●	●	●	●	●	●	●
Mechanical Lift Cylinder Lock	●	●	●	●	●	●	●	●	●
High Capacity Counterweight	●	●	●	●	●	●	●	●	●
OPERATOR STATION									
Pressurized Cab Enclosure with A/C		●	●	●	●	●	●	●	●
IdealAccess™ Fold-Up Door			●	●	●	●	●	●	●
Multi-Function Function Display Screen	●	●	●	●	●	●	●	●	●
Drive Sensitivity Adjustment			●				●		
Electronic Attachment Control - 14-Pin Connector		●	●	●	●	●	●	●	●
Electro-Hydraulic Joystick Controls			●				●		
Selectable Control Pattern Configuration (ISO / Dual-Hand)			●				●		
Variable Speed Control, Selectable On & Off			●				●		
Foot Throttle	●	●	●	●	●	●	●	●	●
Full-Suspension Seat	●	●	●	●	●	●	●	●	●
Air Suspension Seat		●	●	●	●	●	●	●	●
Swing-out Cab Door	●	●	●	●	●	●	●	●	●
Rearview Camera		●	●	●	●	●	●	●	●
Sliding Side Windows	●	●	●	●	●	●	●	●	●

GET ATTACHED



ALL-TACH®

All models feature the easy-to-use All-Tach® (universal-style) attachment mounting system compatible with most allied attachments.

- **SINGLE LEVER DESIGN** for simplicity and strength.
- **HEAVY DUTY MOUNTING PLATE** design for increased rigidity over tube style.



POWER-A-TACH®

Power-A-Tach® all-weather system option allows users to quickly install and remove attachments. An operator leaves the seat only to connect auxiliary hydraulics. This system is compatible with most allied attachments.



GEHL

A WIDE VARIETY OF EDGE ATTACHMENTS
ARE AVAILABLE FROM YOUR GEHL DEALER.

EDGE

