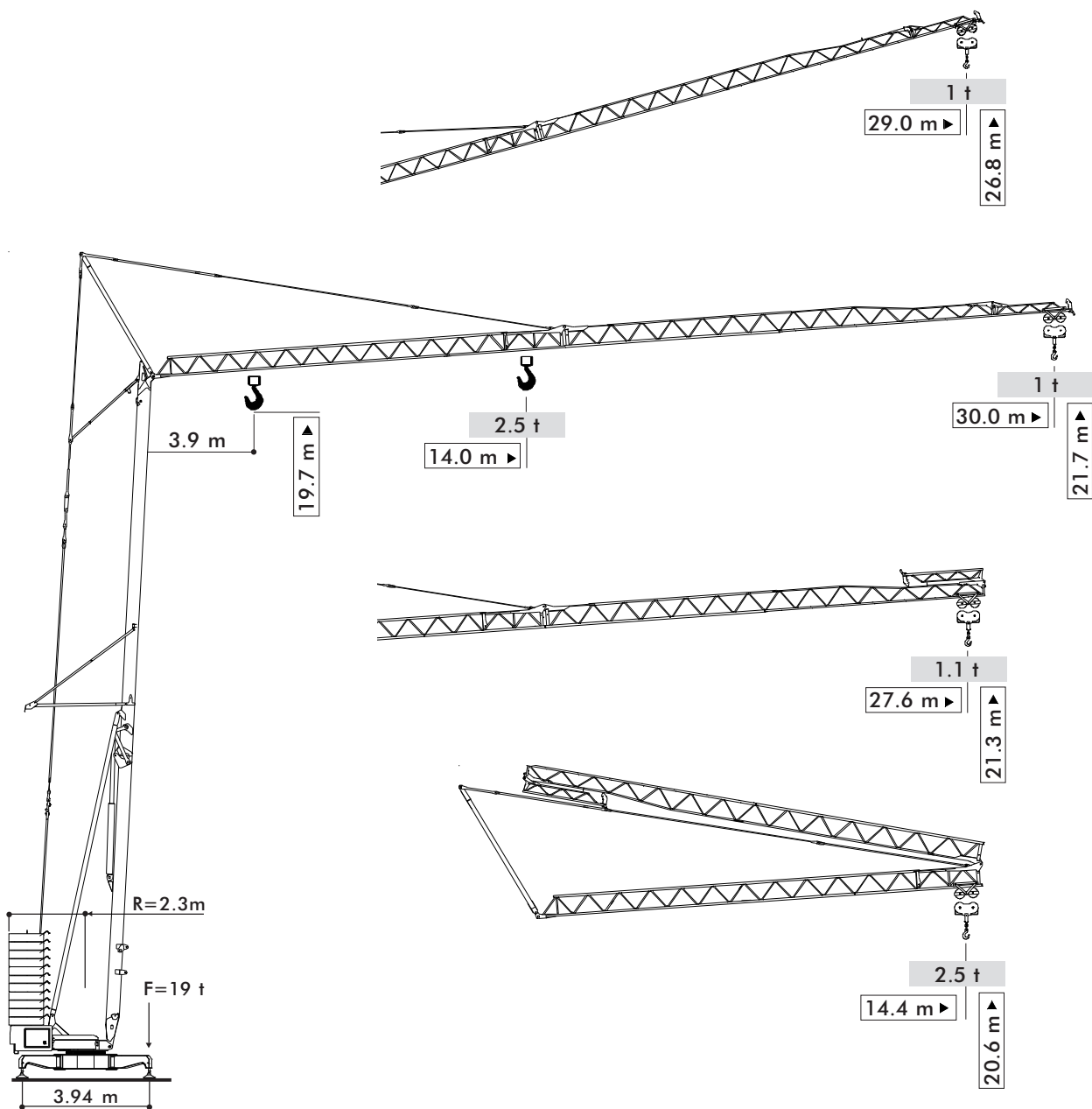


Gru a montaggio rapido
Self-erecting Crane • Grue à montage rapide
Schnellmontagekran • Grúa de montaje rapido



CBR 30 Plus

Diagramma di portata **I** **Load Diagram** **GB** **Courbes de charges** **F** **Lastkurven** **D** **Curvas de cargas** **E**

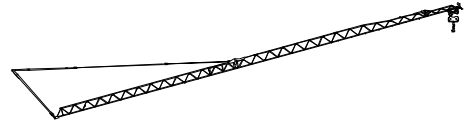
CBR 30 Plus										
2.5 t	- 14.00 m	t	3.9	8	12	16	20	24	28	30
			2.50	2.50	2.50	2.13	1.61	1.30	1.09	1.00

- Braccio massimo
- Maximum jib
- Flèche étendu
- Ausladung
- Pluma extendida



CBR 30 Plus										
1 t	-	t	3.9	8	12	16	20	24	28	30
			1.00	1.00	1.00	1.00	1.00	1.00	1.00	1.00

- Braccio impennato 15°
- Raised jib 15°
- Flèche relevée à 15°
- Auslegersteilstellung 15°
- Pluma inclinada a 15°



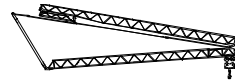
CBR 30 Plus										
2.5 t	14.00 m	t	3.9	8	12	16	20	24	27.6	
			2.50	2.50	2.50	2.13	1.62	1.31	1.10	

- Braccio ripiegato
- Folded jib
- Flèche repliée
- Ausleger eingeklappt
- Pluma cerrada



CBR 30 Plus										
2.5 t	-	t	3.9	8	12	14.4				
			2.50	2.50	2.50	2.50				

- Braccio ripiegato
- Folded jib
- Flèche repliée
- Ausleger eingeklappt
- Pluma cerrada



Meccanismi **I** **Mechanisms** **GB** **Mécanismes** **F** **Antriebe** **D** **Mecanismos** **E**

CBR 30 Plus		m/min	kg	kW
Sollevamento Hoisting Levage Heben Elevación		6.6	2500	2.6
		20	2500	8.8
		40	1300	8.8
Distribuzione • Trolleying • Distribution Katzfahren • Distribución		0 ⇨ 18 ⇨ 40		2.2
Rotazione • Slewing • Orientation Schwenken • Orientación		0 ⇨ 0.2 ⇨ 0.9 tr/min - U/min - rpm		3 daNm
Montaggio • Erection • Montage • Montage • Montaje				2.2 kW
Potenza elettrica necessaria • Power requirements • Puissance électrique nécessaire Anschlußwert • Potencia eléctrica necesaria				20 kVA
Rete elettrica • Main supply • Réseau • Netzstrom • Alimentación				400 V - 50 Hz
Zavorra di completamento - Completion ballast - Gegenballast beton - Lest d'appoint - Lastre de finalización				12650 kg
Peso gru (Zavorra di base inclusa) - Crane weight (Base ballast included) - Kranegewicht (Inkl. Grundballast) - Poids de la grue (Lest de base incluse) - Peso della grua (Lastre de base incluida)				13450 kg

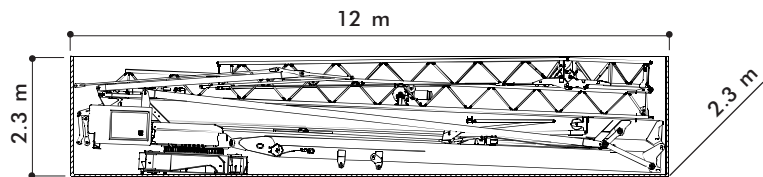
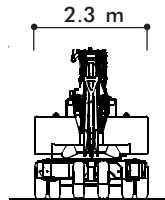
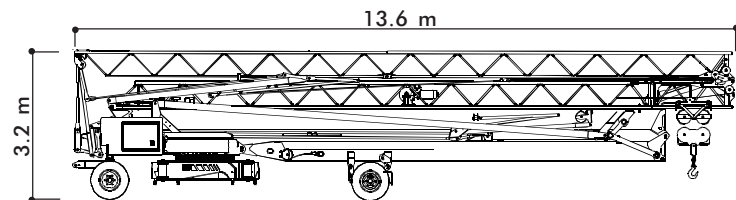
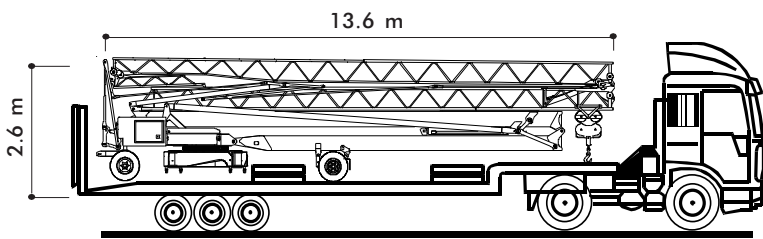
- Movimenti controllati da inverter
- Motions controlled by frequency converter
- Frequenzumrichter gesteuerte Bewegungen
- Mouvements contrôlés par variateur
- Movimientos controlados por variadores

- Montaggio oleodinamico integrale
- Full hydraulic erection
- Vollhydraulische Montage
- Montage hydraulique intégral
- Montaje hidraulico integral

- Trasportabile con zavorra di montaggio
- Trailerable with erection ballast
- Verfahrbar mit Montage-Ballast
- Transportable avec lest de montage
- Transportable con lastre de montaje

- Braccio a ripiegamento oleodinamico
- Hydraulic jib unfolding
- Hydraulisch klappbar Ausleger
- Repliage hydraulique de la flèche
- Pluma con repliegue hidraulico

- Zincatura a caldo torre e braccio
- Galvanized tower and jib
- Ausleger und Turm feuerverzinkt
- Flèche et mât galvanisés
- Torre y pluma cincadas en caliente



40 ft Open Top Container